

# TECHNOLOGICAL SOLUTIONS IN MEASUREMENT, MANAGEMENT, AUTOMATION, PROTECTION AND CONTROL.



ISO 9001

BUREAU VERITAS  
Certification



Achilles

Repro

Registrado

# INDEX

## 1. INTRODUCTION

## 2. MISSION, VISION Y VALUES

## 3. PRODUCTS

## 4. CONTACT

# INTRODUCTION

**Enertronic Proyectos y Suministros** is a company settled in 2006, focused in offering exclusive and specialized technological solutions for different areas. At **Enertronic**, we add to the concept of distribution, prescription, advice and direct support with our own means for the industry.

- ❖ Renewable Energy.
- ❖ Telecommunications.
- ❖ Railway.
- ❖ Data Center.
- ❖ Power Generation and Distribution.
- ❖ Tertiary sector.



# SUPPORT

**Enertronic** offers technical and commercial support, from prescription to commissioning, giving our clients security and stability in there projects.

**Enertronic** is an ISO9001 certified company and supplies technology and products to certify ISO50001 Systems.



# REPAIR SERVICE

Enertronic expands its services with the company IDAS SOLUTIONS, a specialized repair service industrial electronic equipment.

**Official  
Mitsubishi  
Technical Service**

- ❖ Repair of servomotors and special motors.
- ❖ Discontinued equipment supplies.
- ❖ Repair of industrial electronics.
- ❖ Automation component supply.
- ❖ Technical assistance.



# Mission, Vision y Values

## Mission

- Offer our clients technologically advanced solutions that guarantee high profitability and security.

## Vision

- Professionalism, reliability, integrity and constant innovation.

## Values

- Respect for environment, for the Benefit of society.



# PARTNERS





# CITEL

## Protection specialist against transient overvoltages





**CITEL** focuses its activity and experience in the field of network and equipment protection against generated surges. It developed a patented technology that combines high-energy varistors with gas discharge tubes, achieving greater robustness, reliability and end-of-life behavior.

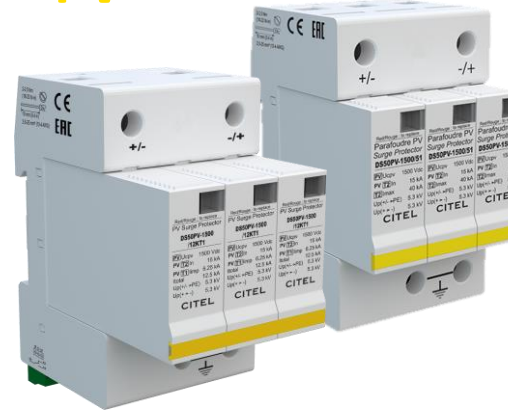
It has Type I, II or III protections for low voltage, photovoltaic, wind, BESS, computer networks, radio frequency, LED lights, telephony, CCTV and gas dischargers.



## DAC&DDC RANGE



## PV



## LSC RANGE



## LED



## DATA / COMM.



## SFD1 FUSES





# Fuses and Holders for PV and EV Applications.

**Adler Elektrotechnik Leipzig GMBH** is one of the most technologically advanced fuse manufacturers with specific solutions for: Photovoltaic, Electric Vehicle (EV and EVSE) and industrial.

- Fuses industrial sector.
- Electric vehicle fuse.
- Photovoltaic fuses.
  - 1.000 / 1.500 VDC.
  - Holders.



ENERTRONIC as the exclusive distributor of ADLER, it offers the full range of solutions for protection from photovoltaic plants to electric vehicles.

## HOLDERS and accessories



## NH type



## Cylindrical Fuses



## Inline Fuses



## Fuses and Holders for EV and Charging Station







# Light Obstruction Specialist



**OBSTA**, designs and manufactures signaling lights to mark all types of obstacles for air navigation for more than 30 years.

**OBSTA** lights are designed according to the latest international standards (ICAO and FAA). They constitute a full range of low, médium and high intensity obstruction lights.



## Flash Compact - Dual Color



## Navilite



## Balisor





# Solutions in Metering and PQA of electrical energy

**SATEC** is a global leader with more than two decades of experience in the research, development and manufacture of energy monitoring solutions.

**SATEC's** product range ranges from basic power meters to mid-to-high range network meters with advanced capabilities for power quality analysis and station / substation automation.



**EM133**



**PM130**



**PRO EM - PM**



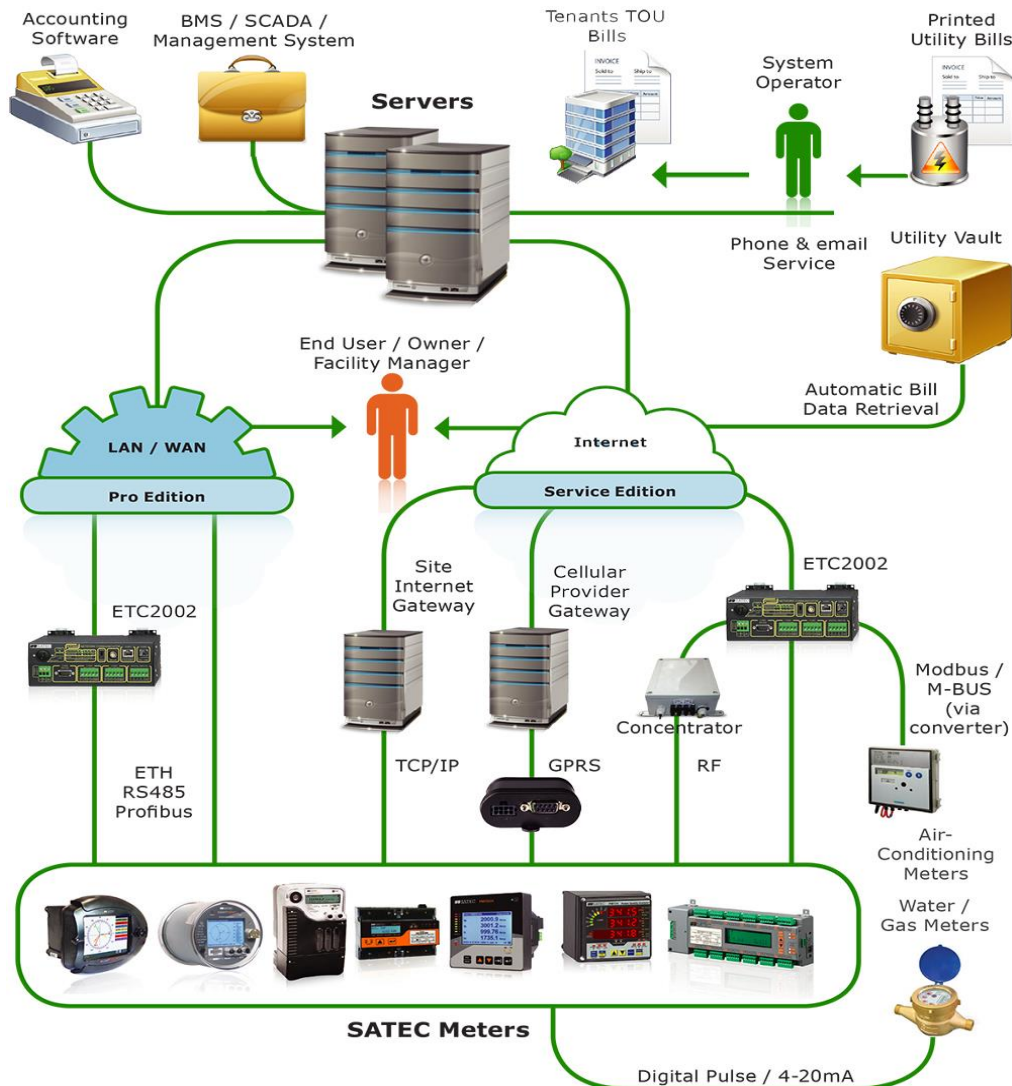
**BFMII**



**PM180**







## ExpertPower

- Energy Efficiency Analysis.
- Energy Savings.
- Customize your own reports.
- Friendly Interface:
  - Control Panel.
  - Customizable API.
- Easy Integration.





# AUTOMATION

**DELTA** is a world leader in automation, specialized in solutions for the industrial sector.

Among all its ranges we can highlight variable speed drives, PLC's, Touch Screens, Industrial Ethernet Switches, Routers, Power Supplies, Servomotors and critical power infrastructures such as UPS.



## AUTOMATION

### VARIABLE SPEED DRIVE 290 w to 690 kW



### SWITCHES



### POWER SUPPLY



### PLC



### SERVOMOTOR



### ROBÓTIC



### HMI



### PC INDUSTRIALS



### TEMPERATURE CONTROL



## Data Center UPS

- ✓ RT 1kVA–10KvA
- ✓ NH 20-120 kVA
- ✓ DPH 25-600 kVA
- ✓ DPS 160/1500 kVA



NH PLUS



DPS





# PV String Monitoring

**Kernel** is a leading company in the photovoltaic monitoring market that provides effective solutions for solar plants.

It has the most competitive and reliable PV monitoring units on the market and more than 15 GW monitored around the world: India, Greece, Spain, Turkey, Germany, Italy, South Africa, Israel, Russia, Thailand ...

## TECNOLOGÍA HALL



\*\*\* Available 100A, 200A  
and 400A HALL

- ✓ Measurement from 25 to 60 A.
- ✓ Available communications:
  - ✓ Modbus RS485.
  - ✓ Fiber Optic.
  - ✓ Wireless Mesh, LoRa.
  - ✓ IEC 61724-1.
- ✓ 8,12,16,20,24 channels.

## TECNOLOGÍA SHUNT



- ✓ Measurement from 15 to 40 A.
- ✓ Available communications:
  - ✓ Modbus RS485.
  - ✓ Fiber Optic.
  - ✓ Wireless Mesh, LoRa.
  - ✓ IEC 61724-1.
- ✓ 8,12,16,20,24,32 channels.



# Smart Sun

## Solar Pump

# SMARTSUN

## Efficient solar pumping, self-configurable

Plug and play, without programming and without adjustments. You just need to enter the pump data and it configures itself.

- ❖ Simple Menu.
- ❖ Self learning.
- ❖ Possibility of AC / DC Hybridization.
- ❖ Specific display for solar pumping.



# Nader

## High Performance Low Voltage Electrical Protection.

Premium Low Voltage protection manufacturer, with a wide range of electrical equipment for Industrial and PV, MCCB (1.500VDC up to 400A), ACB (1.200VAC up to 6.300A) and telecommunications (Magnet-hydraulic).

It's the first manufacturer in the world to offer 3 years warranty. They reinvest a 9% to I+D, which increases realibility of the low voltage electrical equipment up to a 70%.



**Contactors**  
AC/DC 1500VDC-400A



**Magnet- Hydraulic**



**ACB**  
3 and 4 poles AC/1500VDC



**MCCB**  
2, 3 and 4 poles AC/1500VDC



**Disconnecter**  
2, 3 and 4 poles AC/DC



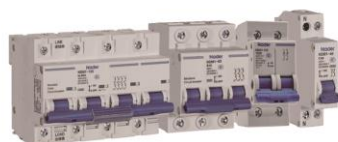
**Motorized Disconnecter**  
1500VDC / 4000A



**Automatic Transfer Switches (ATS)**



**Modular Automatic Recloser**



# WoMaster

## Specialist in Telecommunication



## WoMaster specialist in IoT solutions

- Sensors.
- Connectivity.
- Applications
  - Energy.
  - Railway
  - Smart City
  - Transport.



# OTHER PARTNERS



Swiss precision in pressure and temperature probes



Disconnectors



Low voltage electrical equipment



Components for industrial automation



Electrical and industrial switchgear



Encoders.

**THANK YOU FOR YOUR ATTENTION**

**Enertronic Proyectos y Suministros, S.A**  
**C/Sierra de Guadarrama, nº9 Bis.**  
**San Fernando de Henares. 28830.**  
**Madrid. Spain**

**+34 91 721 85 19**  
**info@enertronic.es**  
**www.enertronic.es**

