



RELIABILITY IN
OBSTRUCTION
LIGHTING



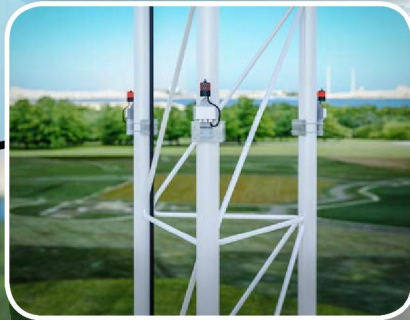
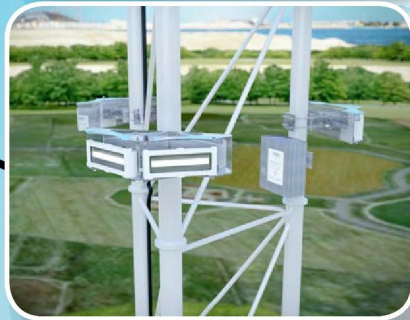
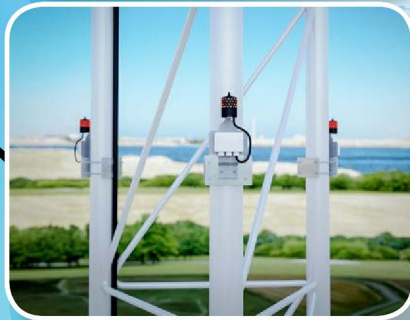
PROYECTOS Y
SUMINISTROS S.A.

OBSTRUCTION LIGHTING FOR TOWER



Example of configuration

Towers from 105m to 150m Day and night operation

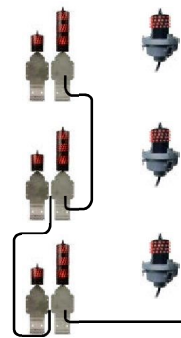


OFI360 Medium intensity
dual color L-865/L-864
at top level

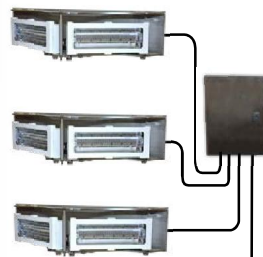
or FAA
fixture



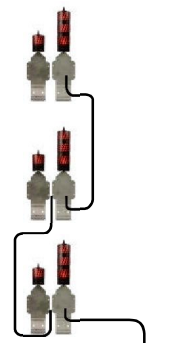
(or red only
for tower with
red & white
painted stripes)



3 NAVILITE low intensity type B
between the intermediate level
and top level.



3 OFI-120 Medium intensity
dual color L-865/L-864
at intermediate level



3 NAVILITE low intensity type B
between the bottom and the
intermediate level.



110 to
240 VAC



110 to 240 VAC
power supply
and Photocell
at the bottom

110 to 240 VAC

In order to help you select the proper marking for your tower, you will find below the most common beacons configurations. These informative recommendations and general rules are provided based on FAA and ICAO regulations.

NIGHT TIME MARKING (Red only)

The night time marking is done with red obstruction lights:

- low intensity type A or B (L-810)
- or combination of medium intensity type B (L-864) and low intensity type B

DAY AND NIGHT TIME MARKING (White flashing or Dual Color)

The day and night time marking can be realized by using either:

- White medium intensity type A (L-865) marking only, with different intensity between day and night mode
- Dual color medium intensity type A & B (L-865/L-864) marking, white during day time and red at night.
- The use of white flashing beacons during day time eliminates the obstacle painting requirements (white and red/orange depending the aviation regulation in place).

OFI360-RW dual color medium intensity L-865/L-864

First fully modular beacon



STAC



L-865/L-864 obstafash with DC integrated power unit

- 6 independent and fully replaceable LED projectors in aluminum and military graded glass.
- Dc power unit inside the flashhead in a stainless enclosure
- 10 comprehensive luminous indicators for quick system diagnostic
- 7 independent power units : 6 for the led white circuits and 1 for the red led circuits
- Test button for day and night
- Dual level Surge Protective Device (AC and DC) for longer life expectancy and improved reliability
- Easy installatin with only captive parts

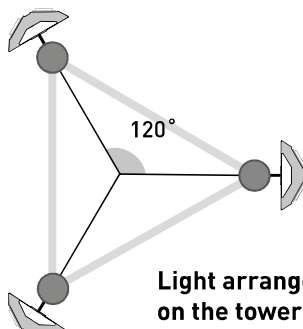
OFI120-RW dual color medium intensity L-865/L-864



STAC



Set of 3 L-865/L-864 OFP-120 around the tower with external power unit



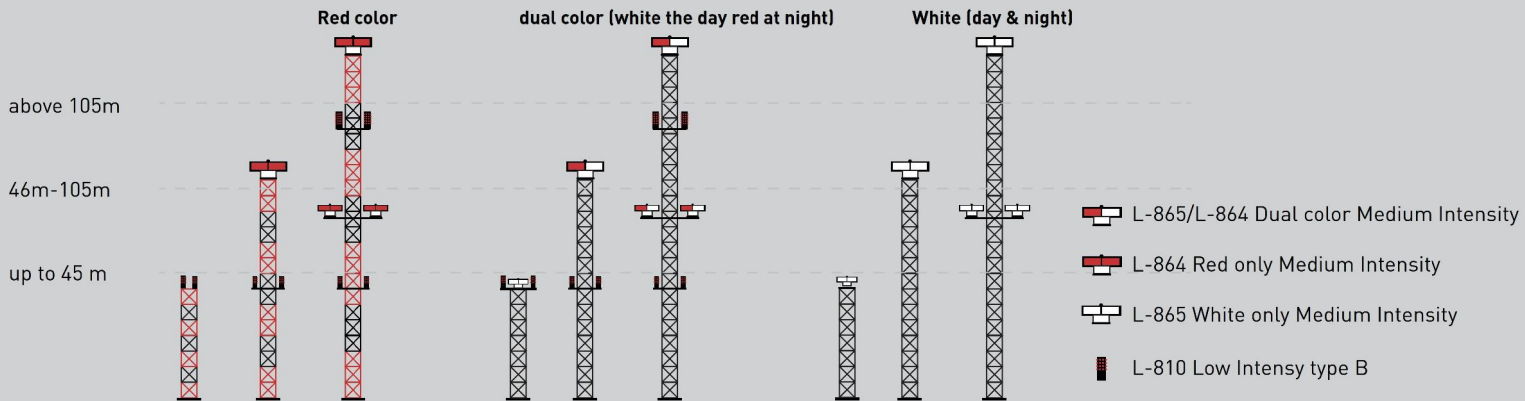
- 3 sets of 2 LED replaceable projectors (1kg each) coming with molded cable and plug connected to the power unit
- Some DC (or AC) power unit as above but external

RED OBSTRUCTION LIGHT

painting of tower required (lighting only at night)

DUAL COLOR OR WHITE ONLY OBSTRUCTION LIGHT

Painting of tower typically not required (lighting day and night)



NAVILITE Side marker Low intensity type B

STAC

Navilite 48 VDC with stainless bracket & Command box



NAVILITE 48 VDC beacon

- Completely molded ; fully waterproof in extreme weather conditions.
- Bird spike at the top
- 64 LED wired 4 by 4 in active redundancy (no blind spot)

Available with stainless bracket and command card inside a polycarbonate box

- 110-240 VAC to 48 VDC converter for 1 to 4 Navilite 48 VDC
- Alarm in case of light or power failure
- Surge protection included
- 1 to 4 light simultaneous or 2+2 in redundancy.

Or with a base with mounting bracket for FAA installation (L-810)

- FAA L-810 certified
- FAA aluminium base with AC power supply inside
- Alarm included
- Surge protection included
- 1" NPT threaded holes for horizontal or vertical mounting

OFC medium intensity L-864

STAC



Direct power supply wiring

Integrated photocell

Aluminium cast moulded base with bracket

- FAA L-864
- ICAO Medium Intensity Type B & C verified
- Self-contained, 360° plug and fix
- Pure hard glass (no plastic)
- NVG compatible in option
- 2 lights in one with 2 LED circuits in redundancy
- Adjustable flash (or steady)
- Alarm in case of light or power failure
- Very low power consumption
- Surge protection included
- Optional interface for GPS
- Dimensions: 20cmx20cmx20cm, Weight: 6kg

Ordering parts

	Ordering part	Power supply	FAA type	ICAO type	System components
	113725UI	110-240VAC	L-865/L-864, dual color medium intensity	Dual color medium intensity type A+B/C	48 VDC dual color flashhead + 120/240 VAC cabinet
	113723UI		L-865 white medium intensity	White medium intensity type A	
	113724I		L-864 red medium intensity	Red medium intensity type B/C	48 VDC red only flashhead + 120/240 VAC cabinet
	113792U	48VDC	L-865/L-864, dual color medium intensity	Dual color medium intensity type A+B/C	48 VDC dual color flashhead
	113791U		L-865 white medium intensity	White medium intensity type A	
	113790U		L-864 red medium intensity	Red medium intensity type B/C	48 VDC red only flashhead
	113758U	110-240VAC	L-865/L-864, dual color medium intensity	Dual color medium intensity type A+B/C	3 dual color OFP-120 + 48 VDC cabinet + 120/240VAC cabinet at the bottom
	113757U		L-865 white medium intensity	White medium intensity type A	
	113756U		L-864 red medium intensity	Red medium intensity type B/C	3 red only OFP-120 + 48 VDC cabinet + 120/240 VAC cabinet at the bottom
	113712U	48VDC	L-865/L-864, dual color medium intensity	Dual color medium intensity type A+B/C	3 dual color OFP-120 + 48 VDC cabinet
	113711U		L-865 white medium intensity	White medium intensity type A	
	113710U		L-864 red medium intensity	Red medium intensity type B/C	3 red only OFP-120 + 48 VDC cabinet
	113715U	110-240VAC	L-865/L-864, dual color medium intensity	Dual color medium intensity type A+B/C	3 dual color OFP-120 + 120/240 VAC cabinet
	113713U		L-865 white medium intensity	White medium intensity type A	
	113714U		L-864 red medium intensity	Red medium intensity type B/C	3 red OFP-120 + 120/240 VAC cabinet

Red light only

	113790RR-240	110-240VAC	Medium intensity type B/C	110-240 VAC with Photocell/GPS in option
	113790RR-48	48VDC	Medium intensity type B/C	48 VDC with Photocell/GPS in option
	113908	110-240VAC	Low intensity type B	48 VDC light + 110-240 VAC power supply (Bracket 113920 to be added)
	113905	48VDC	Low intensity type B	48 VDC light only (Bracket 113920 and junction box 113943 to be added)

Accessories

	100755	48VDC photocell	Photocell connected to dual color cabinet or to a group of 48 VDC red lights only (10A max)	
	113912	110-240VAC	Command box for 1 to 4 navilite 48 VDC	External controller for navilite with infrared and/or red